

Caterpillar 336-07A
Serial No.: JHD00330



Zeppelin Baumaschinen
Zeppelin Baumaschinen GmbH Niederlassung
Hamm
Zeppelinstr. 4
59069 Hamm
Germany
<https://www.zeppelin.com/de-en/cat>

Josef Zumloh
Phone: +49 23857242
Fax: +49 23857288
Mobile: +49 1712667036
josef.zumloh@zeppelin.com

Andreas Kleine
Phone: +49 23857267
Mobile: +49 16090368386
andreas.kleine@zeppelin.com

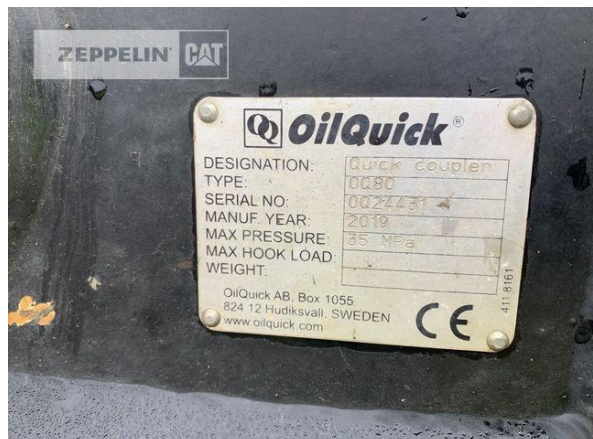
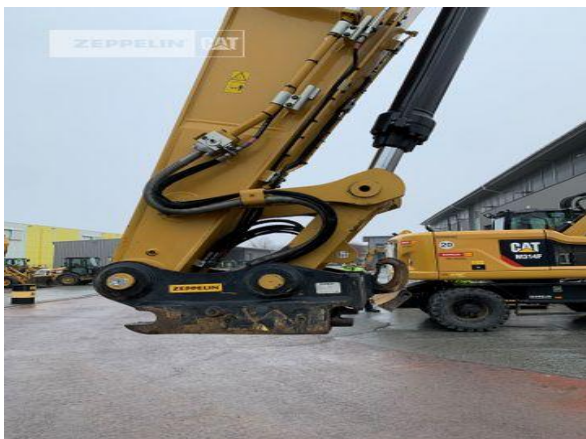
Manufacturer	Caterpillar
Category	Tracked Excavators
Year	2019
Hours	3.936
kind of cabin	cabin ROPS
boom	mono boom
stick lenght	3.200 mm
grapple line	yes
hydraulic lines	lines for hammer/shear
track shoes (pads) wide	850 mm
track shoes (pads) condition	50 %
undercarriage sprockets	40 %
undercarriage idlers	50 %
undercarriage track rollers	50 %
undercarriage track links	40 %
undercarriage track bushings	40 %
undercarriage carrier rollers	60 %
quick coupler	quick coupler hydraulic
quick coupler type	OilQuick OQ80
rear view camera	yes
size class	2,3 cbm
operating weight	37,2 t
engine power	231 kW (315 HP)
air conditioning	yes
equipment	L-Unterwagen

Net price **239.000,00 EUR (excl. VAT)**
Terms of delivery **FCA Zeppelin branch Hamm**

ZEPELIN

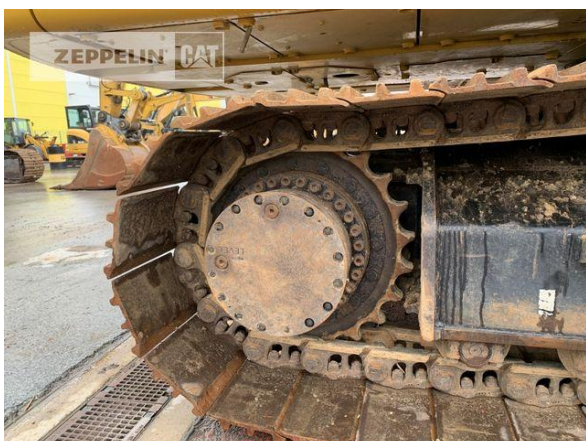
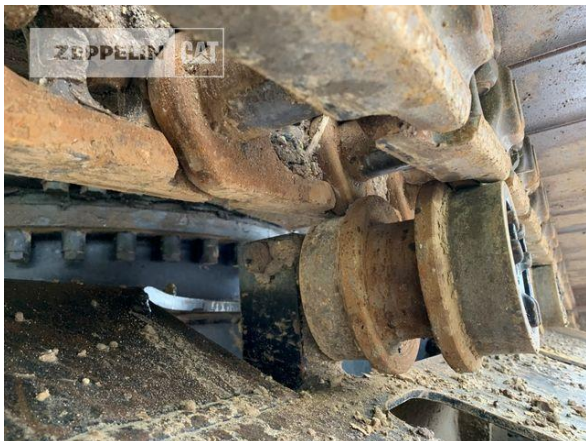


Caterpillar 336-07A
Serial No.: JHD00330



	OilQuick
DESIGNATION:	Quick Coupler
TYPE:	QQ80
SERIAL NO.:	0022431
MANUF. YEAR:	2019
MAX PRESSURE:	35 MPa
MAX HOOK LOAD:	
WEIGHT:	
OilQuick AB, Box 1055 824 12 Hudiksvall, SWEDEN www.oilquick.com	
CE	
411 8161	

Caterpillar 336-07A
Serial No.: JHD00330



ZEPPELIN



Caterpillar 336-07A
Serial No.: JHD00330

