

Caterpillar M315F
Serial No.: F4D01411



Zeppelin Baumaschinen
Zeppelin Baumaschinen GmbH Niederlassung
Hannover
Zeppelinweg 1
30880 Laatzen
Germany
<https://www.zeppelin.com/de-en/cat>

Marc Büsing
Phone: +49 5102700211
Fax: +49 5102700243
Mobile: +49 1712348444
marc.buesing@zeppelin.com

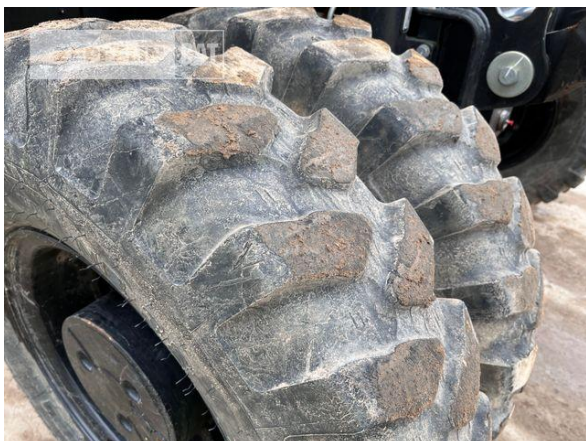
Philipp Westhoff
Mobile: +49 1712342639
philipp.westhoff@zeppelin.com

Manufacturer	Caterpillar
Category	Mobile Excavators
Year	2020
Hours	902
boom	adjustable boom hydr.
stick length	2.300 mm
grapple line	yes
hydraulic lines	lines for hammer/shear
outriggers / blade	blade
tires condition front left	90 %
tires condition front right	90 %
tires condition rear left	90 %
tires condition rear right	90 %
quick coupler	quick coupler hydraulic
quick coupler type	SMP T620 HYD
auto lubrication	Beka-Max
rear view camera	yes
size class	1 cbm
operating weight	16,6 t
engine power	116 kW (159 HP)
air conditioning	yes

Net price **169.000,00 EUR (excl. VAT)**
Terms of delivery **FCA Zeppelin branch Hannover**

This offer is without obligation. The offer is based on our General Terms and Conditions of Sale and Delivery. Changes to equipment and accessories required for technical reasons may be made at any time. Subject to errors, changes and intermediate sale. Statutory value-added tax shall be added to all price.

Caterpillar M315F
Serial No.: F4D01411



Caterpillar M315F
 Serial No.: F4D01411

