

Komatsu PW160-7
Serial No.: H55631

Zeppelin Baumaschinen
Zeppelin Baumaschinen GmbH Niederlassung
Koblenz
Industriestr. 44
56218 Mülheim-Kärlich
Germany
<https://www.zeppelin.com/de-en/cat>

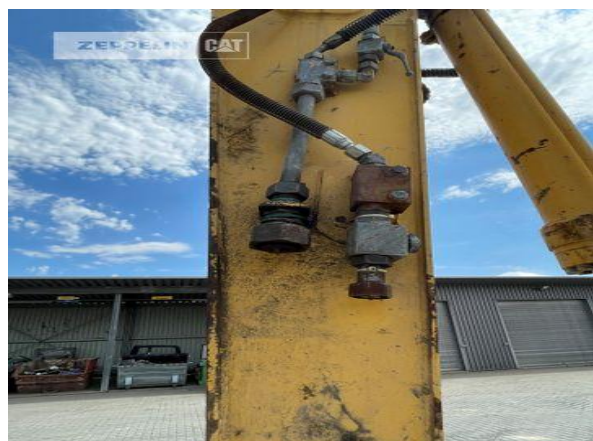
Christof Decker
Phone: +49 2630941923
Fax: +49 2630941930
Mobile: +49 1714116921
christof.decker@zeppelin.com

Manufacturer	Komatsu
Category	Mobile Excavators
Year	2009
Hours	10.756
boom	adjustable boom hydr.
cutting width	600 mm
bucket condition	50 %
grapple line	yes
outriggers / blade	blade
tires condition front left	20 %
tires condition front right	20 %
tires condition rear left	20 %
tires condition rear right	20 %
quick coupler	quick coupler mechanic
Operating Weight	17,7 t
description	Drehstiel!

Net price **39.000,00 EUR (excl. VAT)**
Terms of delivery **FCA Zeppelin branch Koblenz**

This offer is without obligation. The offer is based on our General Terms and Conditions of Sale and Delivery. Changes to equipment and accessories required for technical reasons may be made at any time. Subject to errors, changes and intermediate sale. Statutory value-added tax shall be added to all price.

Komatsu PW160-7
Serial No.: H55631



Komatsu PW160-7
Serial No.: H55631

