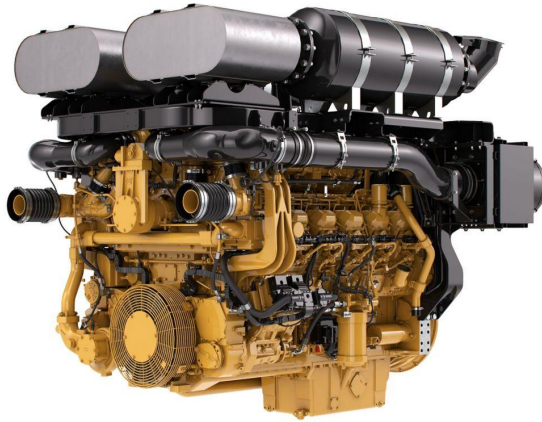


**CAT 3512E Tier 4 Final Well Service Engine**  
Serial No.: 1000004391<https://www.zeppelin.com/de-en/powersystems>

Minimum Rating	1678.0 kW
Maximum Rating	1864.0 kW
Aspiration	Turbocharged-Aftercooled
Displacement	58.9 l
Flywheel and Flywheel Housing	SAE No. 0
Flywheel Teeth	151
Stroke	215.0 mm
Bore	170.0 mm
Emissions	Non-Road Mobile EPA Tier 4 Final
Length	3116.0 mm
Width	2308.69995 mm
Height	2635.0 mm
Weight	7164.0 ton (US)
Maximum Power	1864.0 kW
Minimum Power	1678.0 kW
Emissions	Non-Road Mobile EPA Tier 4 Final

This offer is without obligation. The offer is based on our General Terms and Conditions of Sale and Delivery. Changes to equipment and accessories required for technical reasons may be made at any time. Subject to errors, changes and intermediate sale. Statutory value-added tax shall be added to all price.