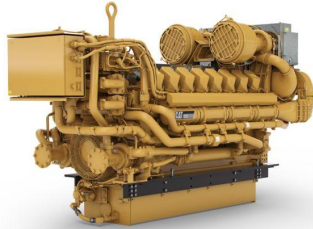


## CAT C175-16 Propulsion Engine

<https://www.zepelin.com/de-en/powersystems>



Power Range	2683-3420 bhp (2001-2550 kW)
Speed Range	1600-1800 rpm
Emissions	IMO II
Aspiration	TA
Bore	175 mm
Stroke	220 mm
Displacement	84,67 l
Rotation from Flywheel End	Counterclockwise
Configuration	Vee 16, 4-Stroke-Cycle Diesel
Dry Weight	13.041 kg
Height	2.478 mm
Length	4.515 mm
Width	1.845 mm
Maximum Power	2.550 kW
Minimum Power	2.001 kW
Emissions	IMO II

This offer is without obligation. The offer is based on our General Terms and Conditions of Sale and Delivery. Changes to equipment and accessories required for technical reasons may be made at any time. Subject to errors, changes and intermediate sale. Statutory value-added tax shall be added to all price.