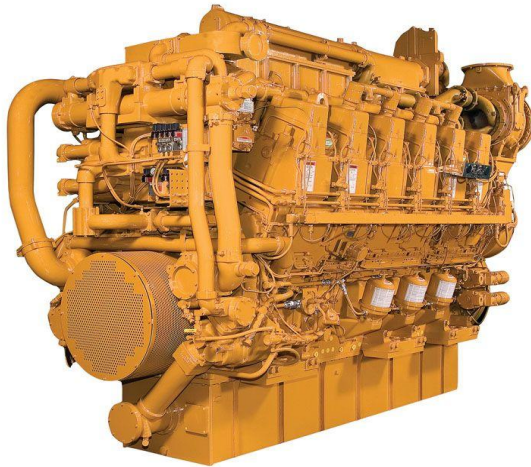


CAT C280-6 Propulsion Engine

<https://www.zepelin.com/de-en/powersystems>



Power Range	2320-2722 bhp (1730-2030 kW)
Speed Range	900-1000 rpm
Emissions	IMO II
Aspiration	TA
Bore	280.0 mm
Stroke	300.0 mm
Displacement	111.0 l
Rotation from Flywheel End	Counterclockwise or clockwise
Configuration	In-line 6, 4-Stroke-Cycle Diesel
Dry Weight	15680.0 kg
Length	4013.0 mm
Width	1803.0 mm
Height	2743.0 mm
Emissions	IMO II
Minimum Power	1730.0 kW
Maximum Power	2030.0 kW

This offer is without obligation. The offer is based on our General Terms and Conditions of Sale and Delivery. Changes to equipment and accessories required for technical reasons may be made at any time. Subject to errors, changes and intermediate sale. Statutory value-added tax shall be added to all price.