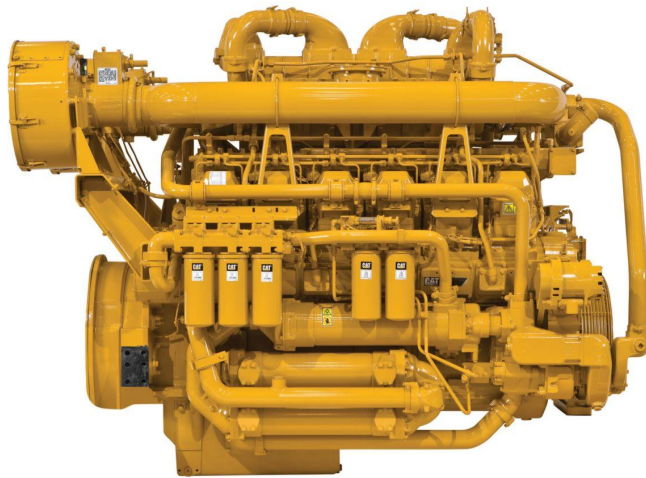


CAT Cat® 3512B Industrial Diesel Engine

<https://www.zeppelin.com/de-en/powersystems>



Maximum Power	1231.0 kW
Maximum Torque	7180.0 Nm @ 1600 rpm
Rated Speed	1800 rpm
Minimum Power	1119.0 kW
Emissions	Non-Certified
Engine Configuration	V-12, 4-Stroke-Cycle Diesel
Bore	170.0 mm
Stroke	190.0 mm
Displacement	51.8 l
Aspiration	Turbocharged Aftercooled
Rotation from Flywheel End	Counterclockwise
Aftertreatment	-
Length	3067.0 mm
Width	1785.0 mm
Height	1806.0 mm
Weight - Net Dry - Basic Operating Engine Without Optional Attachments	6078.0 kg

This offer is without obligation. The offer is based on our General Terms and Conditions of Sale and Delivery. Changes to equipment and accessories required for technical reasons may be made at any time. Subject to errors, changes and intermediate sale. Statutory value-added tax shall be added to all price.