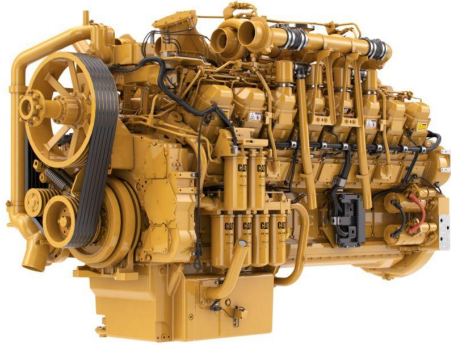


CAT Cat® 3516C Industrial Diesel Engine

<https://www.zeppelin.com/de-en/powersystems>



Maximum Power	1506.0 kW
Maximum Torque	10254.0 Nm @ 1600 rpm
Rated Speed	1750 rpm
Minimum Power	1506.0 kW
Emissions	U.S. EPA Tier 2 Nonroad Equivalent Emission Standards (Not Currently EPA Certified)
Engine Configuration	V-16, 4-Stroke-Cycle Diesel
Bore	170.0 mm
Stroke	215.0 mm
Displacement	78.0 l
Compression Ratio	14.7:1
Aspiration	Turbocharged Aftercooled
Rotation from Flywheel End	Counterclockwise
Aftertreatment	-
Length	3278.0 mm
Width	1530.0 mm
Height	2062.0 mm
Weight - Net Dry - Basic Operating Engine Without Optional Attachments	7840.0 kg

This offer is without obligation. The offer is based on our General Terms and Conditions of Sale and Delivery. Changes to equipment and accessories required for technical reasons may be made at any time. Subject to errors, changes and intermediate sale. Statutory value-added tax shall be added to all price.