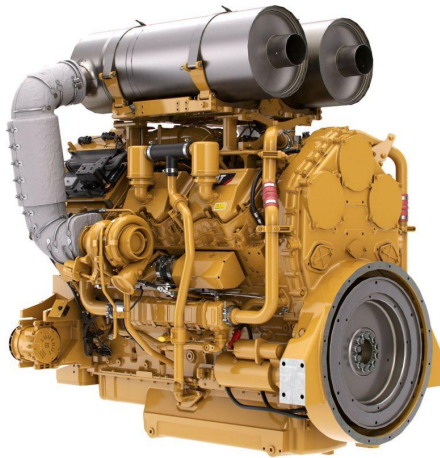


CAT Cat® C27 Diesel Engine

<https://www.zeppelin.com/de-en/powersystems>



Maximum Power	783.0 kW
Maximum Torque	4674.0 Nm @ 1600 rpm
Rated Speed	1800 rpm
Minimum Power	597.0 kW
Emissions	U.S. EPA Tier 4 Final
Engine Configuration	V-12
Bore	137.2 mm
Stroke	152.4 mm
Displacement	27.0 l
Compression Ratio	16.0:1
Aspiration	Twin Turbocharged-Aftercooled (TTA)
Combustion System	Direct Injection
Rotation from Flywheel End	Counterclockwise
Aftertreatment	DOC
Length	1874.0 mm
Width	1600.0 mm
Height	1370.0 mm
Weight - Net Dry - Basic Operating Engine Without Optional Attachments	3004.0 kg

This offer is without obligation. The offer is based on our General Terms and Conditions of Sale and Delivery. Changes to equipment and accessories required for technical reasons may be made at any time. Subject to errors, changes and intermediate sale. Statutory value-added tax shall be added to all price.

CAT Cat® C27 Diesel Engine

