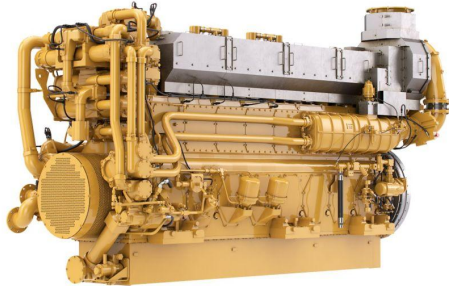


## CAT Cat C280-8 Propulsion Engine

<https://www.zepelin.com/de-en/powersystems>



Power Range	3084-3393 bhp (2300-2530 bkW)
Speed Range	900 rpm
Emissions	IMO II
Aspiration	TA
Bore	280 mm
Stroke	300 mm
Displacement	148 l
Rotation from Flywheel End	Counterclockwise or clockwise
Configuration	In-line 8, 4-Stroke-Cycle Diesel
Height	2.642 mm
Dry Weight	19.000 kg
Width	1.803 mm
Length	4.953 mm
Minimum Power	2.300 kW
Maximum Power	2.530 kW
Emissions	IMO II

This offer is without obligation. The offer is based on our General Terms and Conditions of Sale and Delivery. Changes to equipment and accessories required for technical reasons may be made at any time. Subject to errors, changes and intermediate sale. Statutory value-added tax shall be added to all price.