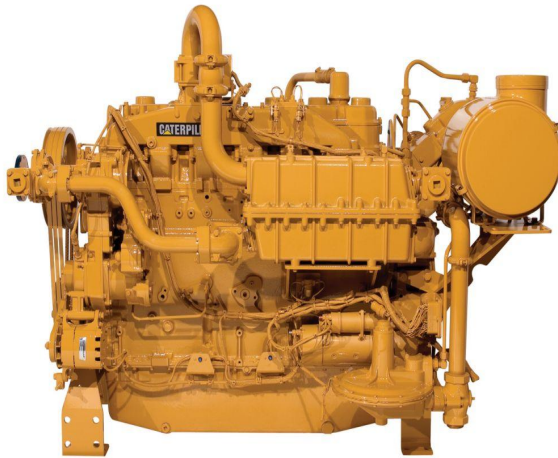


## CAT G3304B Gas Compression Engine

<https://www.zepelin.com/de-en/powersystems>



Minimum Rating	71.0 ekW
Maximum Rating	71.0 ekW
Emissions	NSPS 2010
Displacement	7.0 l
Compression Ratio	10.5:1
Aspiration	Naturally Aspirated
Rotation from Flywheel End	Counterclockwise
Flywheel and Flywheel Housing	SAE No. 1
Flywheel Teeth	156
Weight - Dry	1022.3 kg
Oil Change Interval	750
Ignition, Protection	ADEM™ A4
Air/Fuel Ratio Control	ADEM™ A4
Stroke	152.0 mm
Bore	121.0 mm
Cooling System	16.0 l
Lube Oil System - Refill	31.0 l
Minimum Power	71.0 kW
Maximum Power	71.0 kW
Emissions	NSPS 2010

This offer is without obligation. The offer is based on our General Terms and Conditions of Sale and Delivery. Changes to equipment and accessories required for technical reasons may be made at any time. Subject to errors, changes and intermediate sale. Statutory value-added tax shall be added to all price.