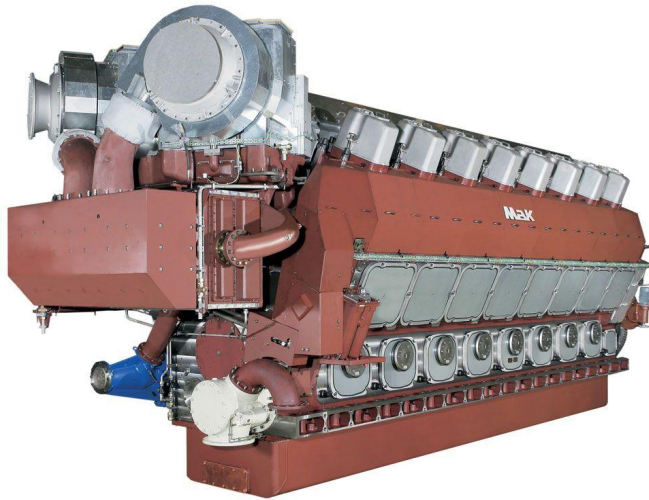


**MAK VM 43 C Marine Propulsion Engine**  
Serial No.: 18547496

<https://www.zeppelin.com/de-en/powersystems>



Power Range	12000 - 16800 kW
Speed Range	500-514 rpm
Emissions	IMO II
Aspiration	Turbocharged
Bore	430.0 mm
Stroke	610.0 mm
Rotation from Flywheel End	Counterclockwise / Clockwise
Configuration	12, 16 cylinder
Swept Volume	88.6 l/cyl
Minimum Dry Weight	160.0 kg
Minimum Length	9842.0 mm
Maximum Length	11943.0 mm
Minimum Height	5122.0 mm
Maximum Height	5098.0 mm
Minimum Width	3890.0 mm
Maximum Width	4027.0 mm
Maximum Power	16800.0 kW
Minimum Power	12000.0 kW
Emissions	IMO II

This offer is without obligation. The offer is based on our General Terms and Conditions of Sale and Delivery. Changes to equipment and accessories required for technical reasons may be made at any time. Subject to errors, changes and intermediate sale. Statutory value-added tax shall be added to all price.